

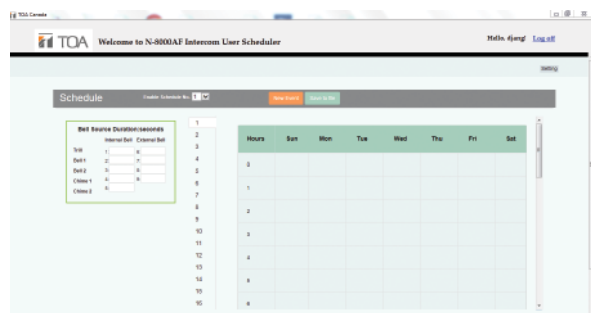


INSTALLATION AND OPERATING INSTRUCTIONS

N-8000 SCHEDULER MANUAL

N-8000SCHED

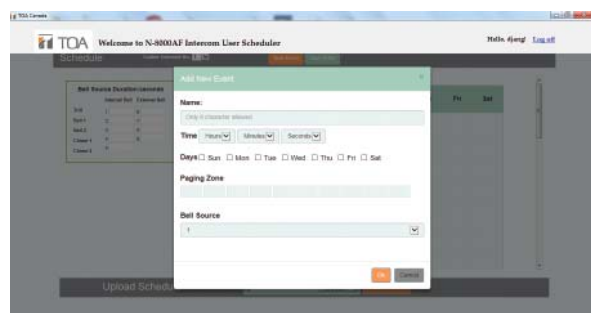
»» Main Page - Top Section



»» Main Page - Bottom Section



»» Add an Event



»» Login Screen



TABLE OF CONTENTS

General Description	2
Hardware and PC Requirements	2
Before Installation.	2
Installation	4
Activation	7
User Registration and Login.	8
Errors and Troubleshooting	9

Thank you for purchasing TOA's N-8000 Scheduler Software.

Please carefully follow the instructions in this manual to ensure trouble-free use of your software.

GENERAL DESCRIPTION

N-8000SCHD is a software application to control the N-8000AF Audio Interface Unit. This software gives access to the schedule and bell configuration portion of the existing N-8000 scheduling software. With this software multiple users can be granted access to make changes to the schedule.

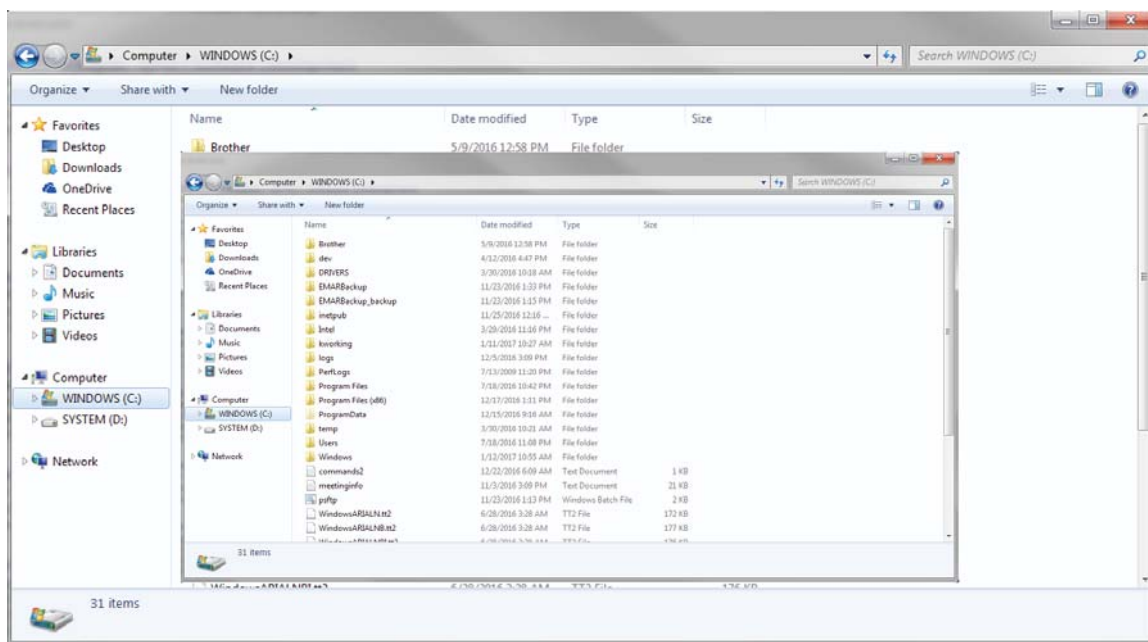
HARDWARE AND PC REQUIREMENTS

- This application is only supported by Windows PC with Operating System Windows 7 or higher
- Internet Explorer version 10 or higher
- Minimum 2Gb RAM
- Minimum 250 GB hard drive
- Minimum i3 processor

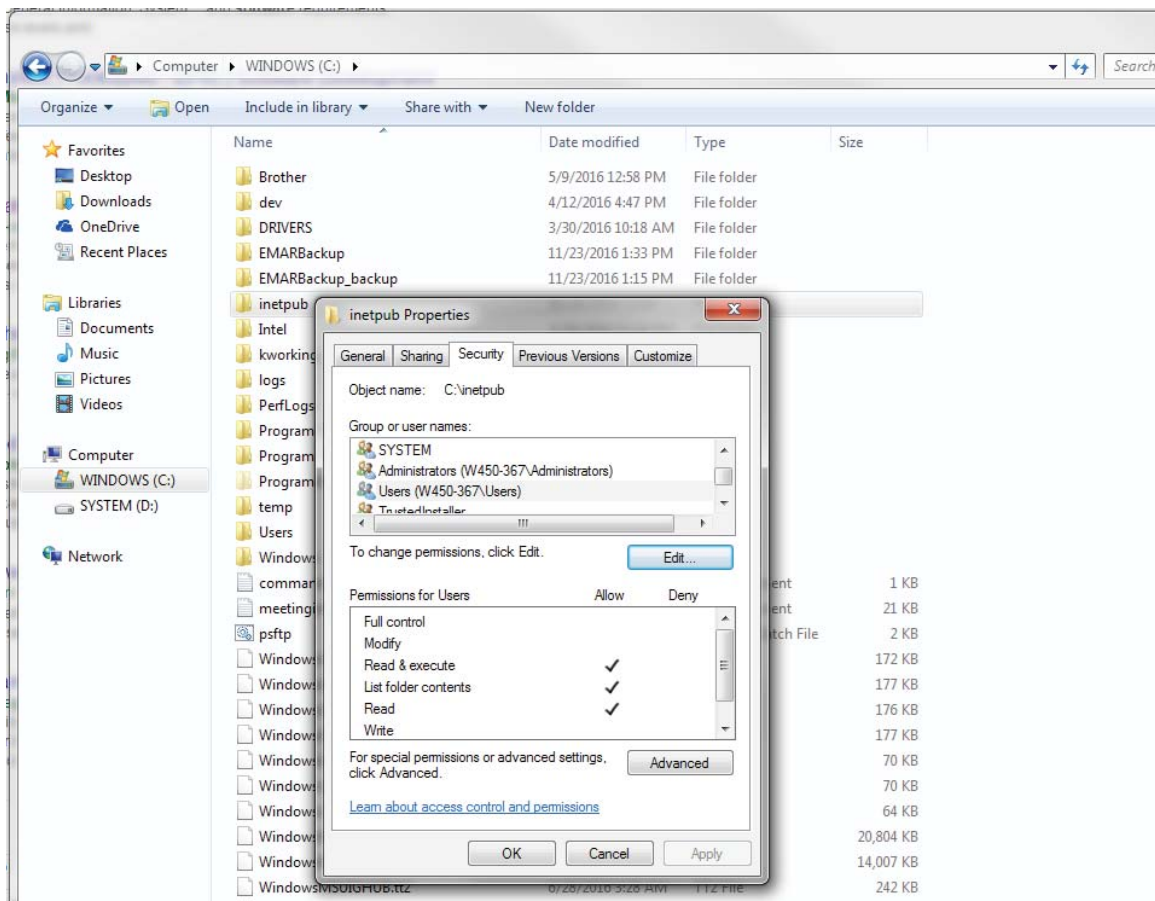
BEFORE INSTALLATION

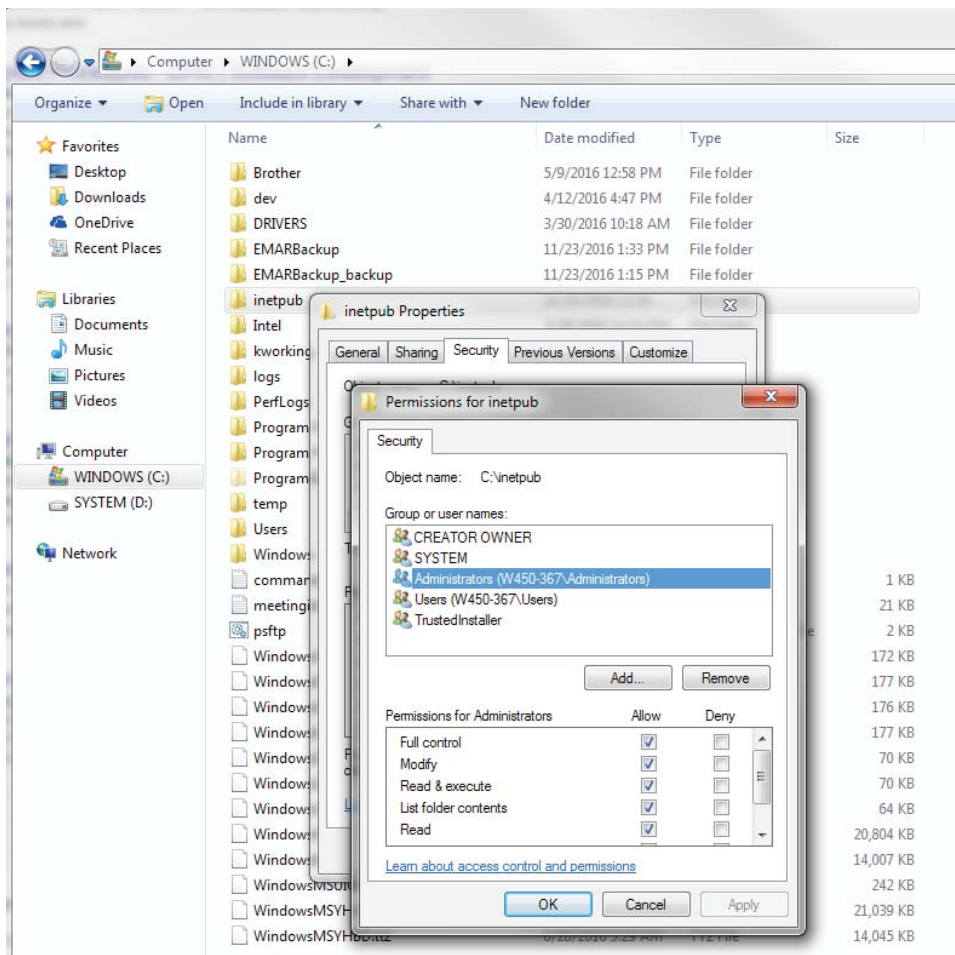
- Please make sure the account under which the user is logged in is a local administrator account.
- If you are unsure if the account is local administrator then please contact your IT administrator.
- Please follow the images below to make sure the user has read write access to the initpub folder under C: drive.

1. Right click on the inetpub folder and select properties.



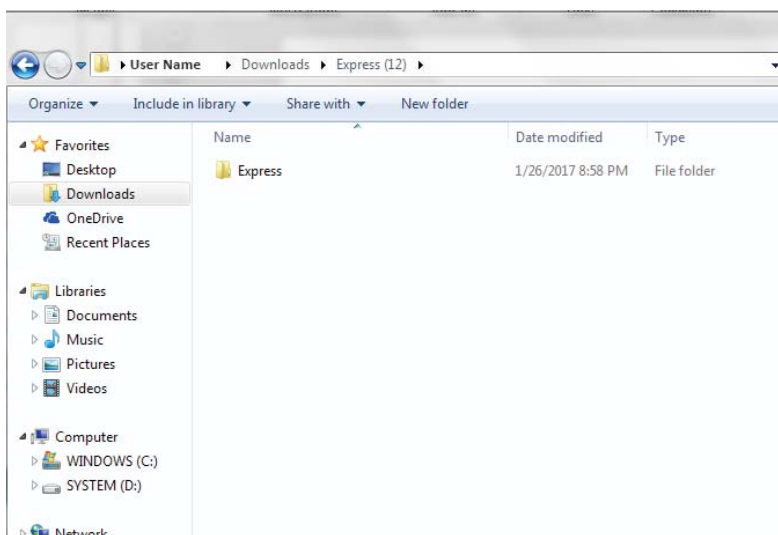
2. Select the security tab. Under Group username please look for your username and select the name.
3. After select the username make sure all the permissions for the user are selected. If all the permissions are not selected then click on edit and select allow for all the options and click on apply.



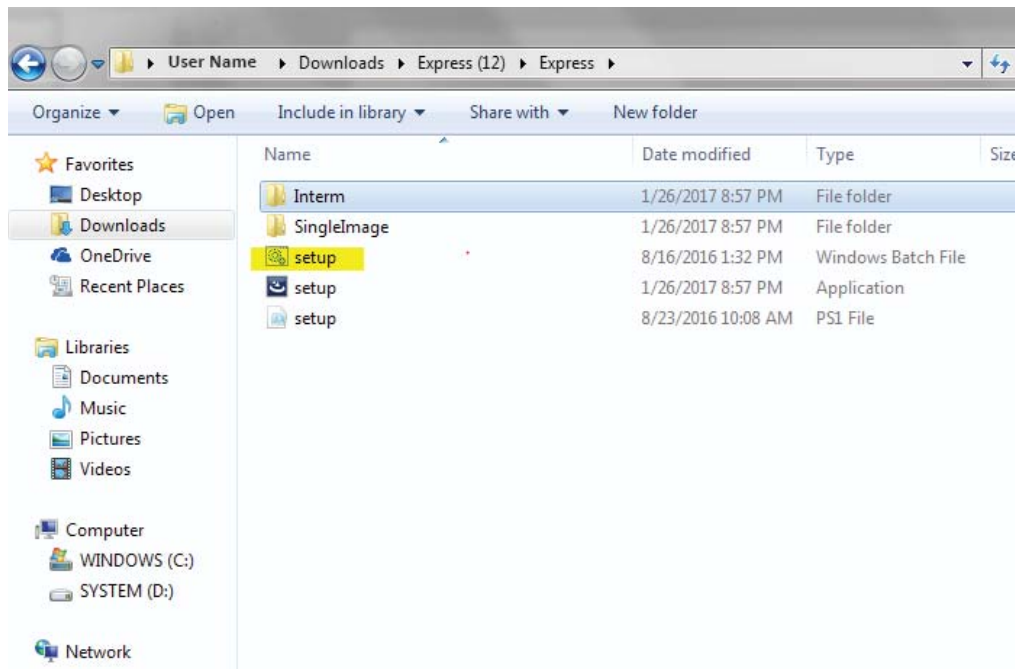


INSTALLATION

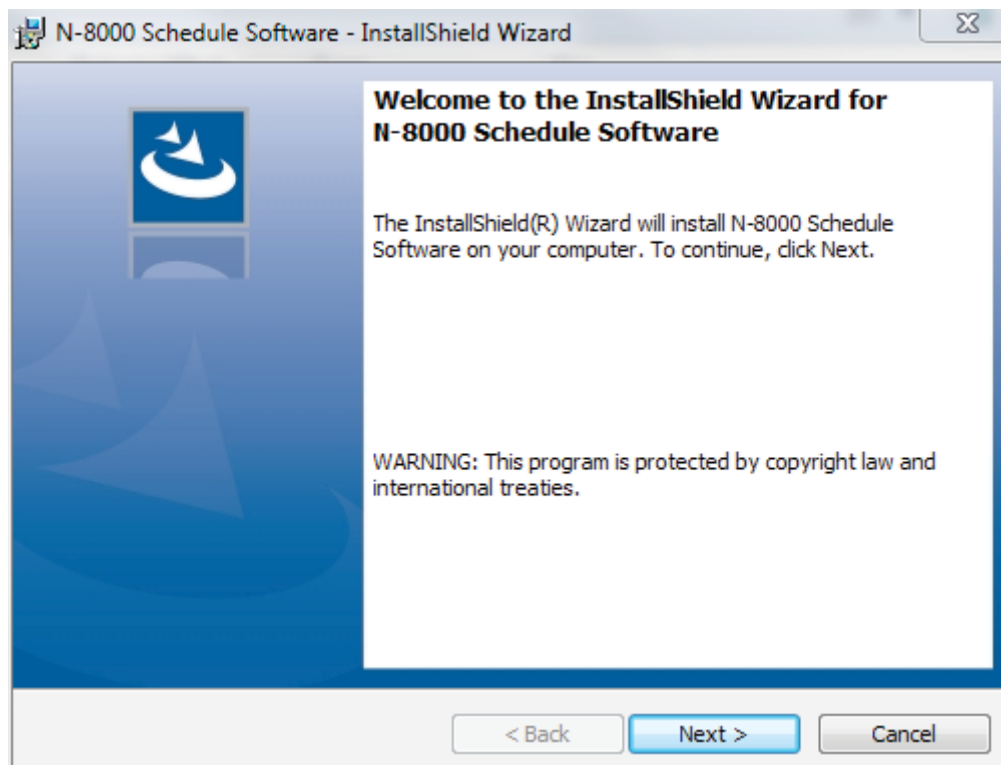
- Unzip the installer package.
- Click and enter the Express folder.
- Double click the setup windows batch file and click run. Wait until you see the popup with next or cancel button (*Follow the following screenshots*).
- If prerequisite files are not detected they are automatically installed. Please be patient as this process could take a few minutes.



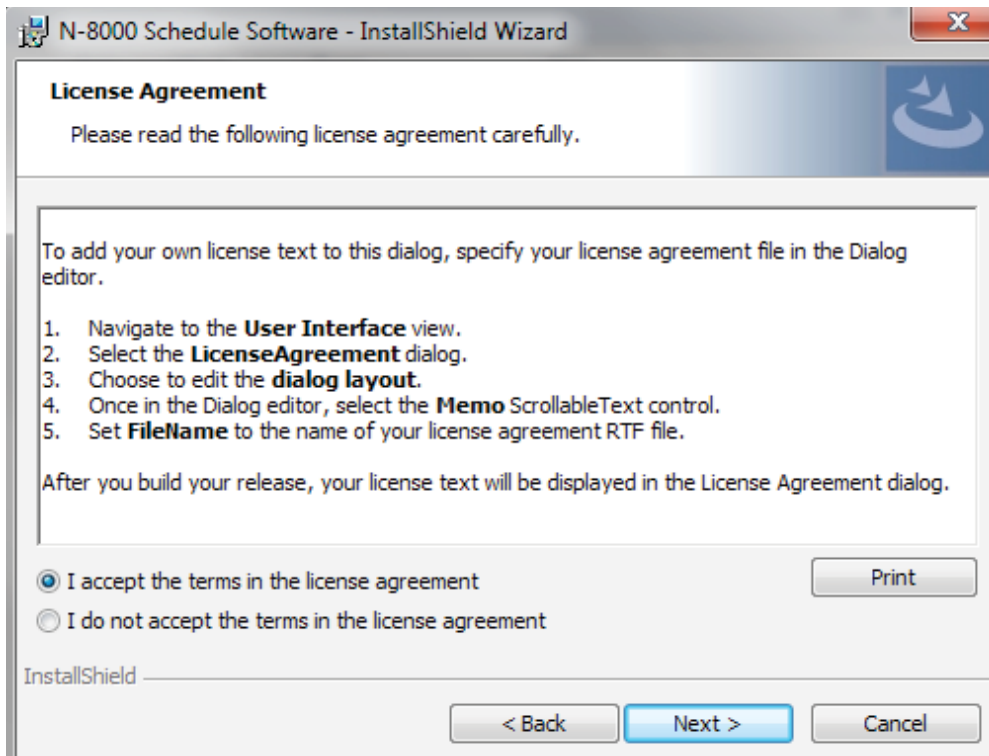
1. Double click on the highlighted file and select run



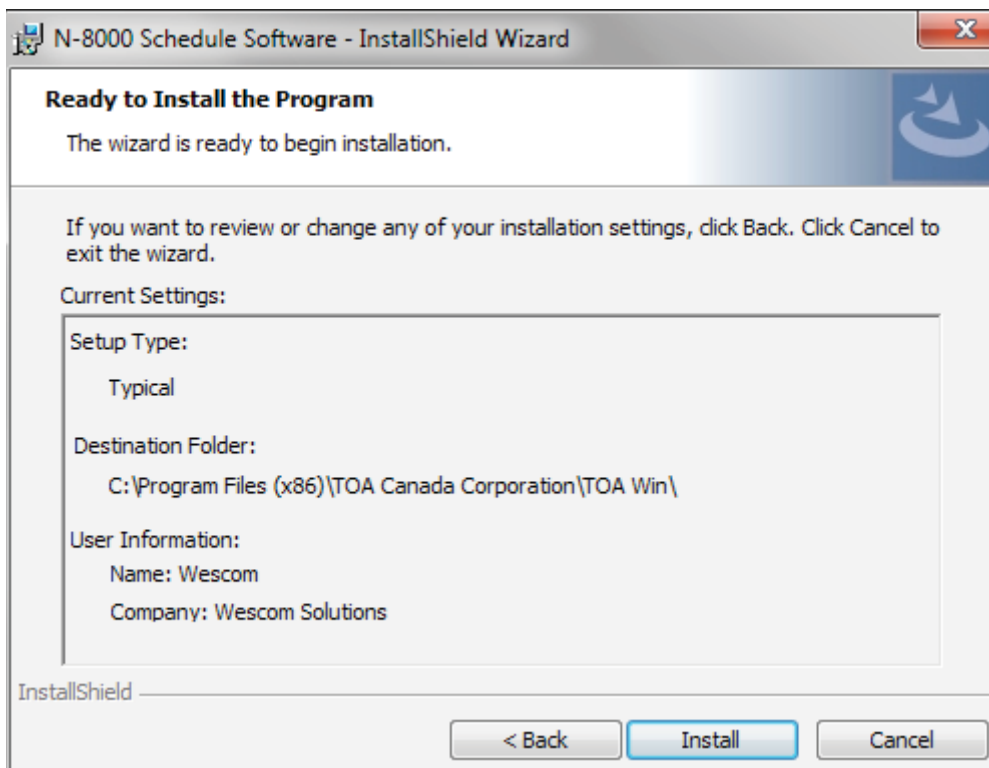
2. Click on next button



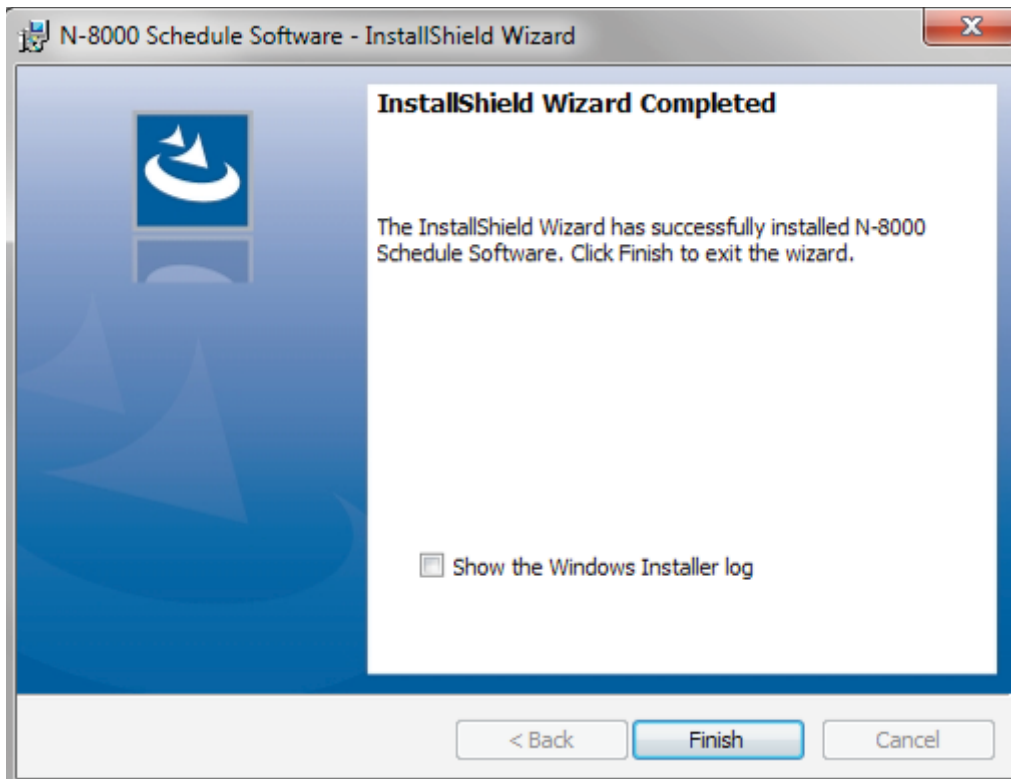
3. Select "I accept the terms...." Click on next



4. Click on install and wait for the install to complete.



5. Click on finish and installation is complete



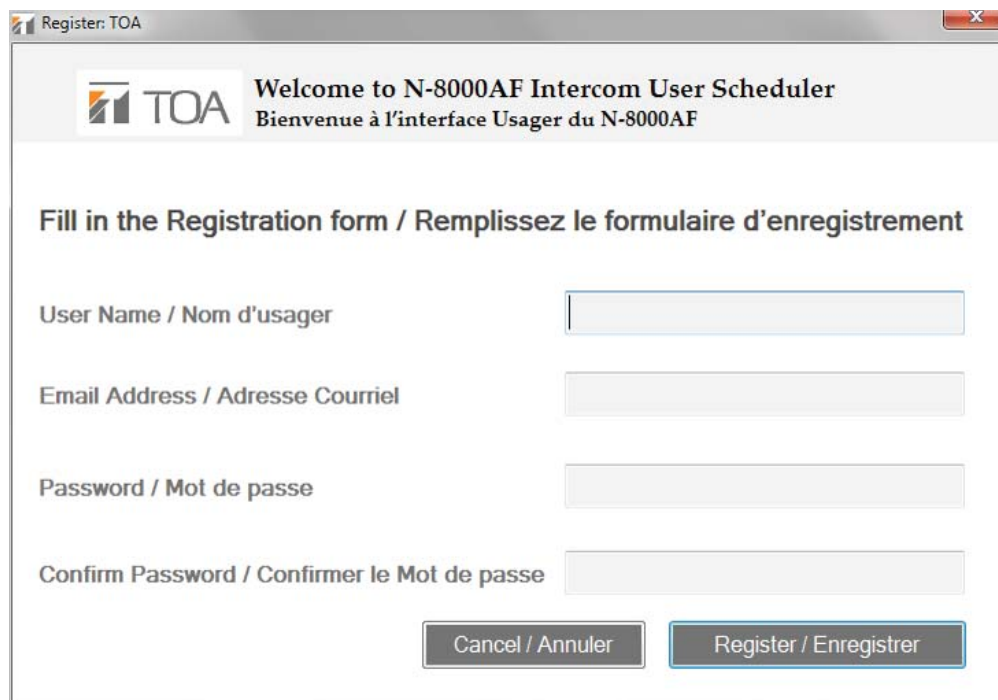
ACTIVATION

- Open the N-8000 Schedule application from the desktop or from all programs under the windows start menu.
- Enter the key provided in the box and click on validate key (*see image below*).

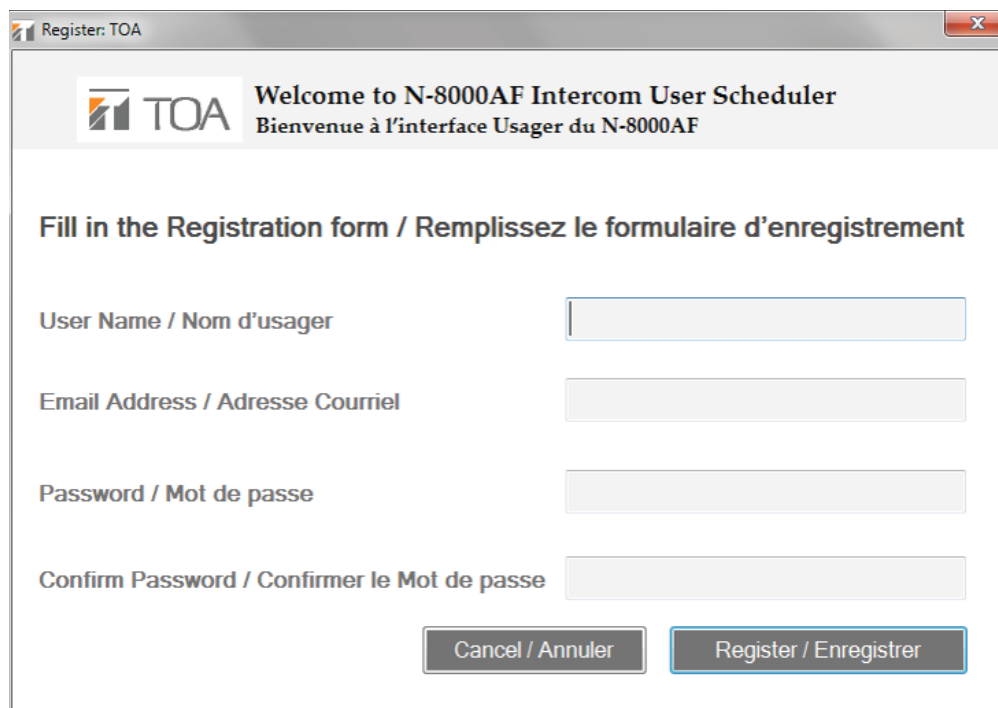


USER REGISTRATION AND LOGIN

- Click on register now button.
- Change the language between English and French.
- Please see the images on the next slide for the registration form.
- After completing the registration use username and password created to login into the application and start using N-8000 scheduling software.



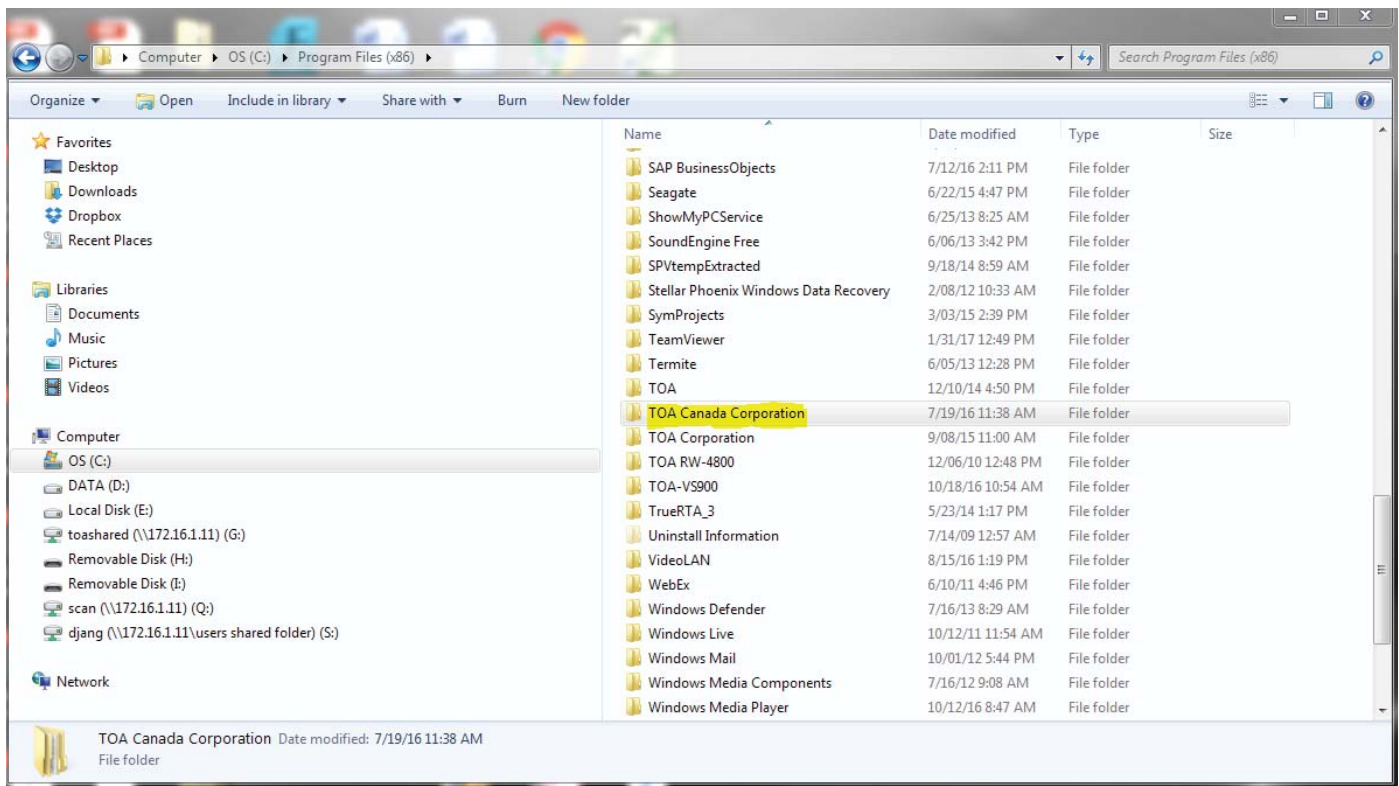
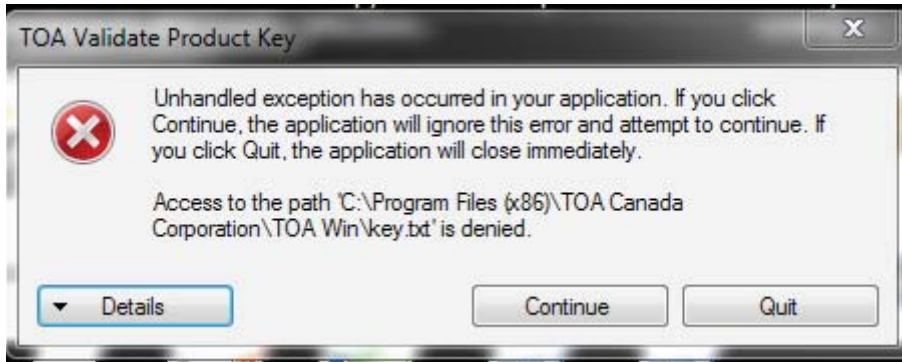
The screenshot shows a window titled "Register: TOA" with a close button. The header area contains the TOA logo and the text "Welcome to N-8000AF Intercom User Scheduler" and "Bienvenue à l'interface Usager du N-8000AF". Below the header, the instruction "Fill in the Registration form / Remplissez le formulaire d'enregistrement" is displayed. The form consists of four input fields: "User Name / Nom d'utilisateur", "Email Address / Adresse Courriel", "Password / Mot de passe", and "Confirm Password / Confirmer le Mot de passe". At the bottom right, there are two buttons: "Cancel / Annuler" and "Register / Enregistrer".

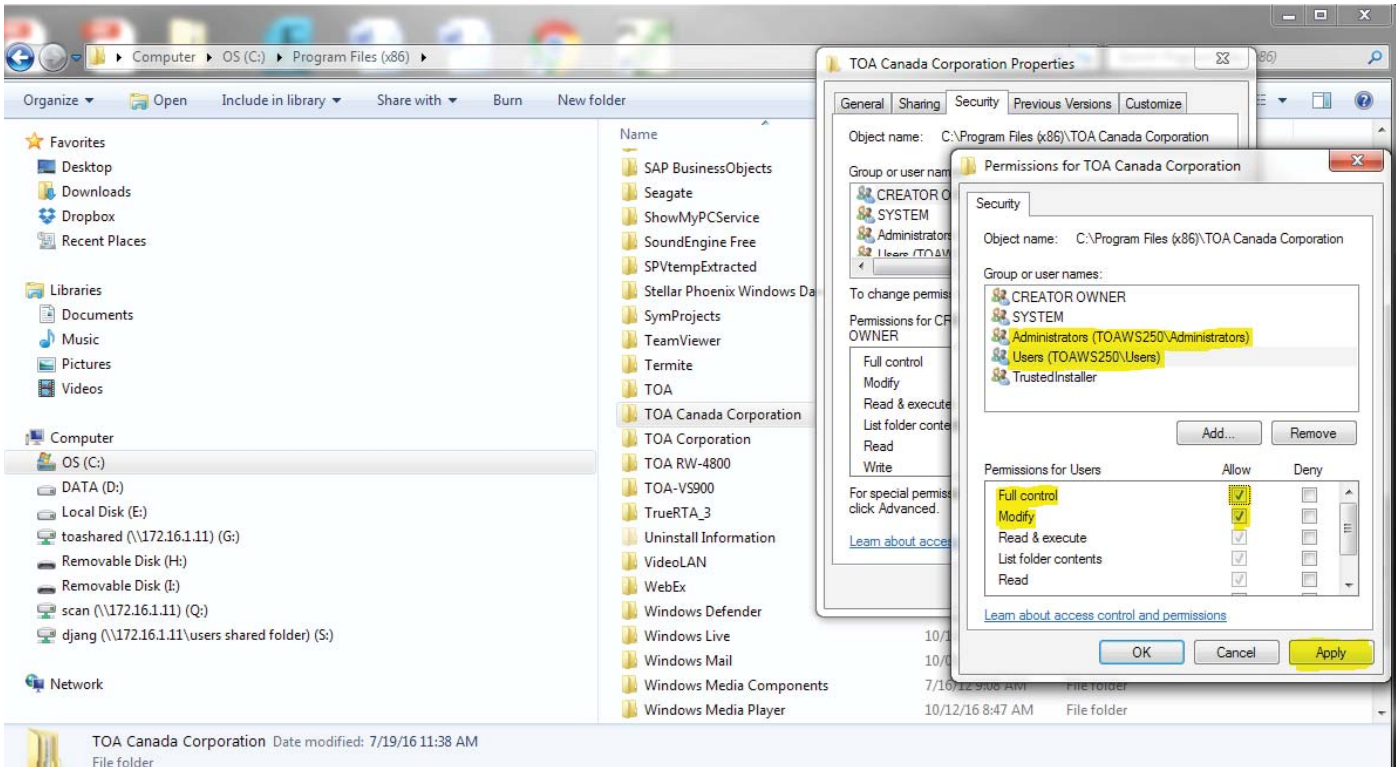
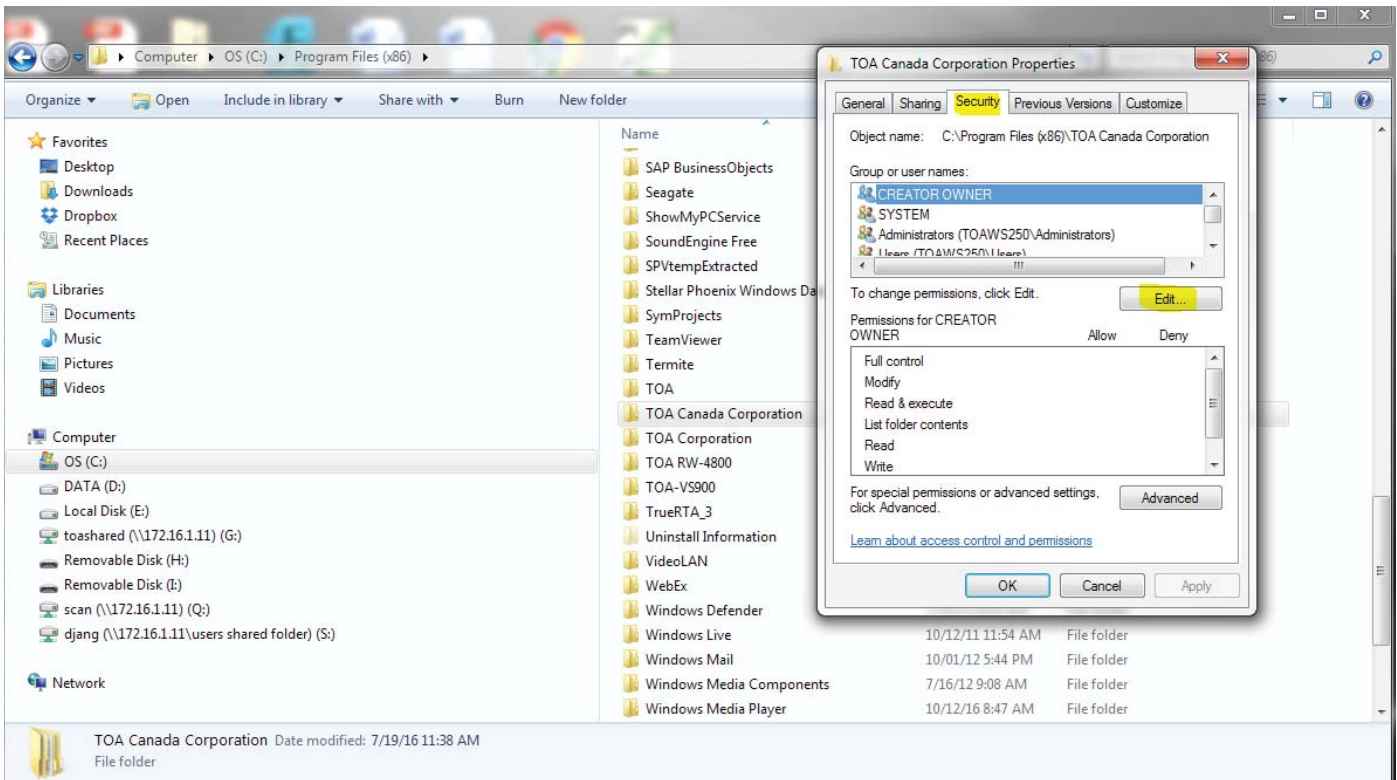


This is a duplicate of the previous screenshot, showing the same "Register: TOA" window with the registration form and buttons.

ERROR AND TROUBLESHOOTING

- If you get this error after entering the license key (see below). It means that either the user does not have the proper rights to the C drive or the installer has been used before.
- If you run the installer once it cannot be used again and you will have to request a new copy of the install file from TOA Canada.





TOA Canada Corporation
 6150 Kennedy Road, Unit 3
 Mississauga, ON, L5T 2J4
 1-800-263-7639 • 905-564-3570
 technicalsupport@toacanada.com
 www.TOAcanda.com